



see the world in a new light
SILVER RAY



TAKE A CLOSER LOOK

Click below to find out more about *Silver Ray* and what it's like onboard our newest ship.

EXPLORE →

Welcome to a new way
of seeing, of travelling, of experiencing.
Open your senses and let the world in
as you gain a new perspective
filled with light.
Welcome to Silver Ray.

Table of contents

4	28
DESIGNED BY LIGHT	AN EVOLUTION IN LUXURY
6	Sea And Land Taste – S.A.L.T. 32
SUSTAINABILITY	S.A.L.T. Lab and Chef’s Table 34
The future of sailing is bright 10	Fine dining 40
12	A new La Terrazza 42
OPENNESS	A bar or lounge, wherever you look 48
<i>Silver Ray</i> doesn’t just have one good side, it has two 16	A dazzling array of suites 54
It’s time to bring the outside in 18	62
Let there be light 26	SILVER RAY VOYAGES
	Deck plans 64
	Suites 66



Designed by light.

Building on our shining success with *Silver Nova* in 2023, our second Nova-class ship, *Silver Ray*, is a guiding light for the future of luxury travel. Its bold, asymmetrical design creates wide open spaces and vast breathtaking views of your destination everywhere you look. Innovative and indulgent luxury experiences make your voyage unforgettable, while cutting-edge technologies and a whole new approach to sustainability ensure respect for the environment, whenever and wherever you sail.



*Silver Ray is more than
just a way to not have
a care in the world...*



...it's about caring
for the world in
an entirely new way.

SUSTAINABILITY

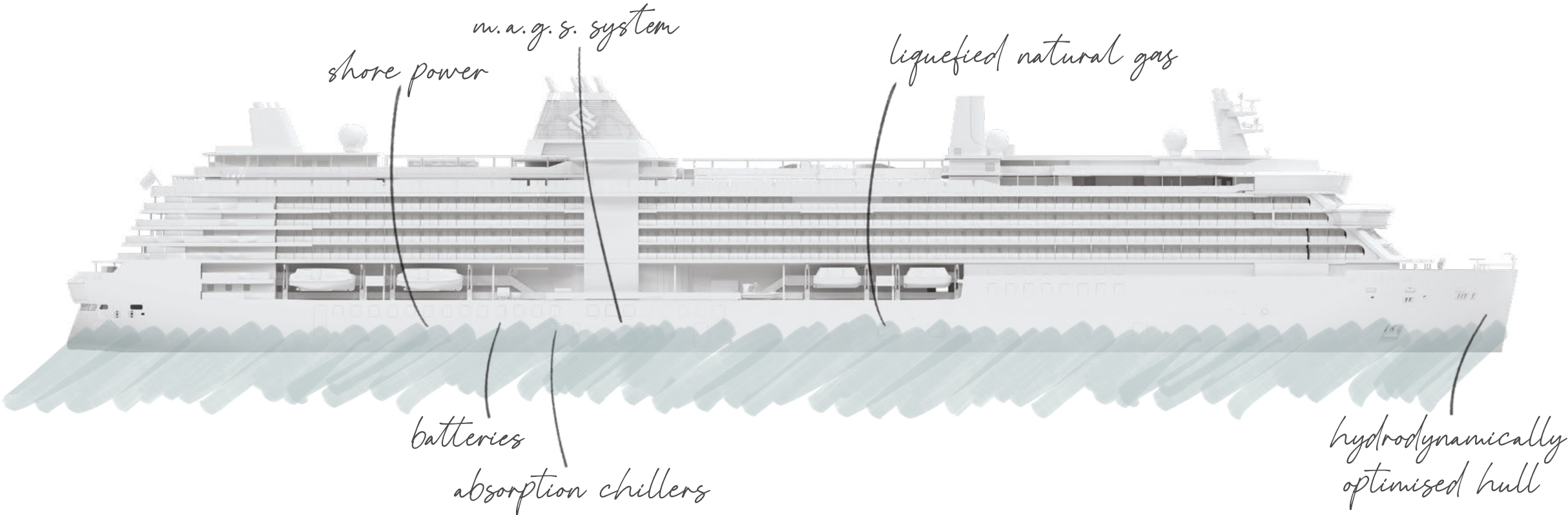
On *Silver Ray* we take care of everything, including the environment.

The ocean ecosystem is our home. It's also how we reach our incredible destinations. However, it's as fragile as it is vast. With *Silver Ray*, we're shining a light on how to take better care of our world and its inhabitants when we sail. Thanks to state-of-the-art technologies, it's one of the most sustainable cruise ships ever built: a true reflection of our deep commitment to the sea, environment and communities we visit around the world.

Lower emissions. Higher efficiency. The future of sailing is bright.

Silver Ray was designed to lighten its environmental impact as much as possible, starting with the carbon footprint for construction. The hull was designed to increase dynamic efficiency and minimise fuel consumption, and our Nova-class ships are equipped with Shore Power, a feature that allows them to be plugged into onshore energy supplies where available, cutting emissions while in port. *Silver Ray* also

incorporates the latest technology to reduce onboard waste, such as the newly-developed Micro Auto Gasification System (M.A.G.S.) for lower incineration emissions, and a Waste Heat Recovery System which allows the ship to reuse waste heat (i.e. from the absorption chillers) for even more energy efficiency. All this helps make *Silver Ray* a leading light for luxury travel, today and tomorrow.





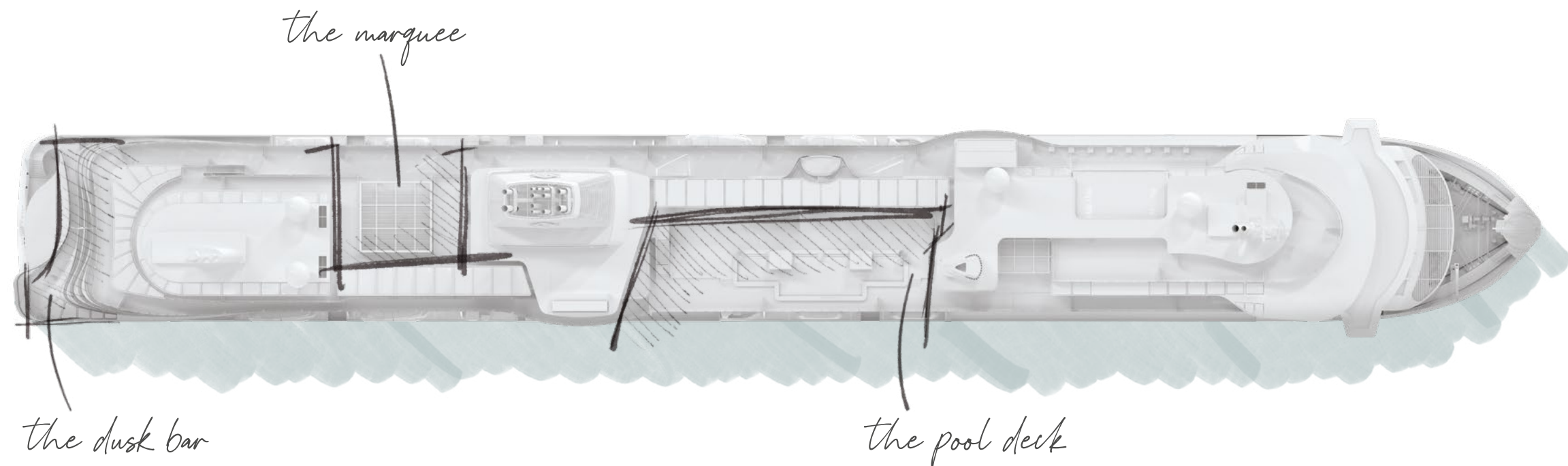


OPENNESS

Open up to a new point of view.

With its incredible 270° open panoramas, *Silver Ray's* groundbreaking design surrounds you inside with all the beauty of the outside. As you gaze out from your suite's wall-to-wall and floor-to-ceiling windows you'll feel the space between you and your destination simply melt away.

Silver Ray doesn't just have one good side, it has two.

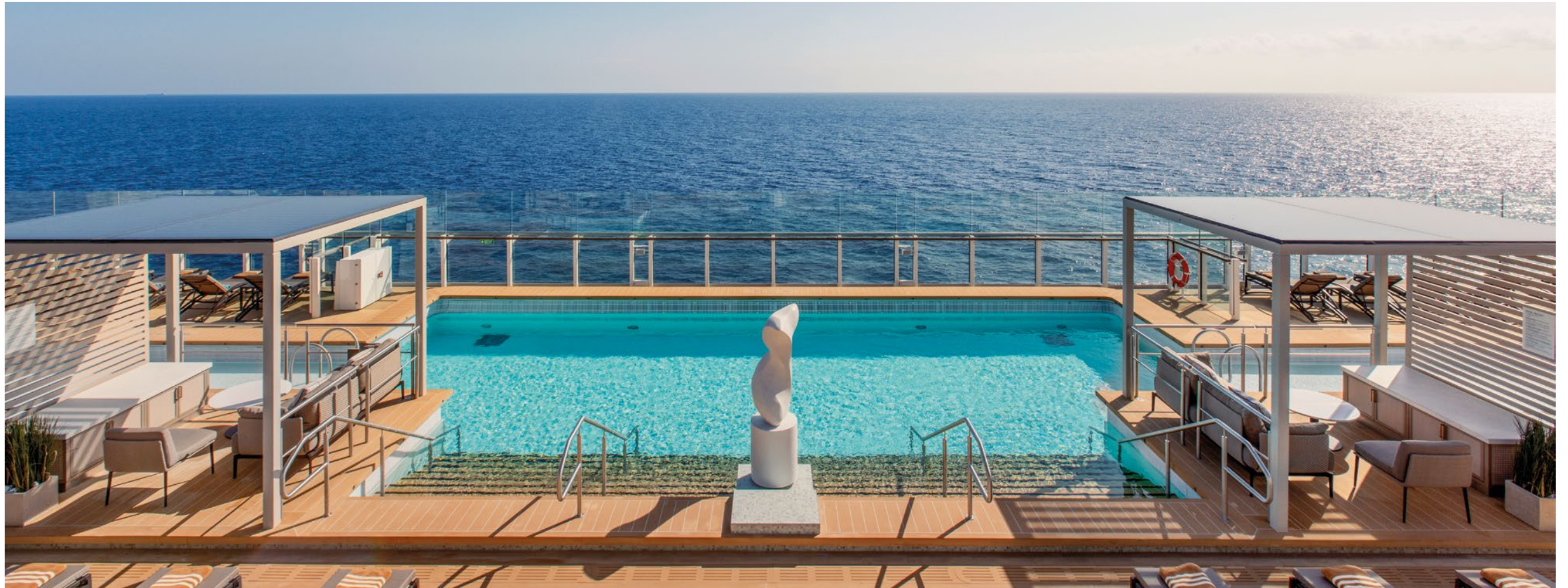


Thanks to a revolutionary design that prizes light and openness over symmetry, *Silver Ray* has beautiful views all around, opening you up to your destination whether you're in your suite or out and about. To top it off, the uppermost deck features an infinity whirlpool and large swimming pool looking over the water, from the water.

The Marquee: For *al fresco* dining and drinks.

The Pool Deck: Our fleet's largest pool opens right out to your destination.

The Dusk Bar: Savour a cocktail as you admire the unique view aft at sunset.



It's time to bring the outside in.

As you wander the expansive light-filled decks of *Silver Ray*, you'll marvel at just how much sea is visible around you at every turn, all thanks to its unique design. In fact, in some moments it may feel like you're not even on a ship at all.



The Pool Deck surrounds you both inside and outside the water, with an extraordinary open horseshoe design that features unobstructed views out to sea and the beauty of your destination wherever you are. These extend from the main pool all the way to the bar so you can enjoy every second and every sip.

Views of The Pool Deck onboard *Silver Ray*, featuring an extra-large central pool



The Dusk Bar welcomes you to enjoy the horizon all around, as this open-air bar offers up incredible 270-degree views. Enjoy an espresso in the afternoon as you gaze out at your destination, a hot chocolate on chillier days, or a savoury cocktail at sunset as you mix it up with your fellow travellers.

Open-air view of The Dusk Bar at sunset,
located on Deck 10

The Marquee is a sight to see, the perfect way to relax onboard with two delectable open dining options in one – The Grill and Spaccanapoli – both overlooking your destination. With seaside tables and a large variety of dishes, from a quick bite to a Hot Rocks dinners under the stars, it's the place to be on *Silver Ray* (see next page).

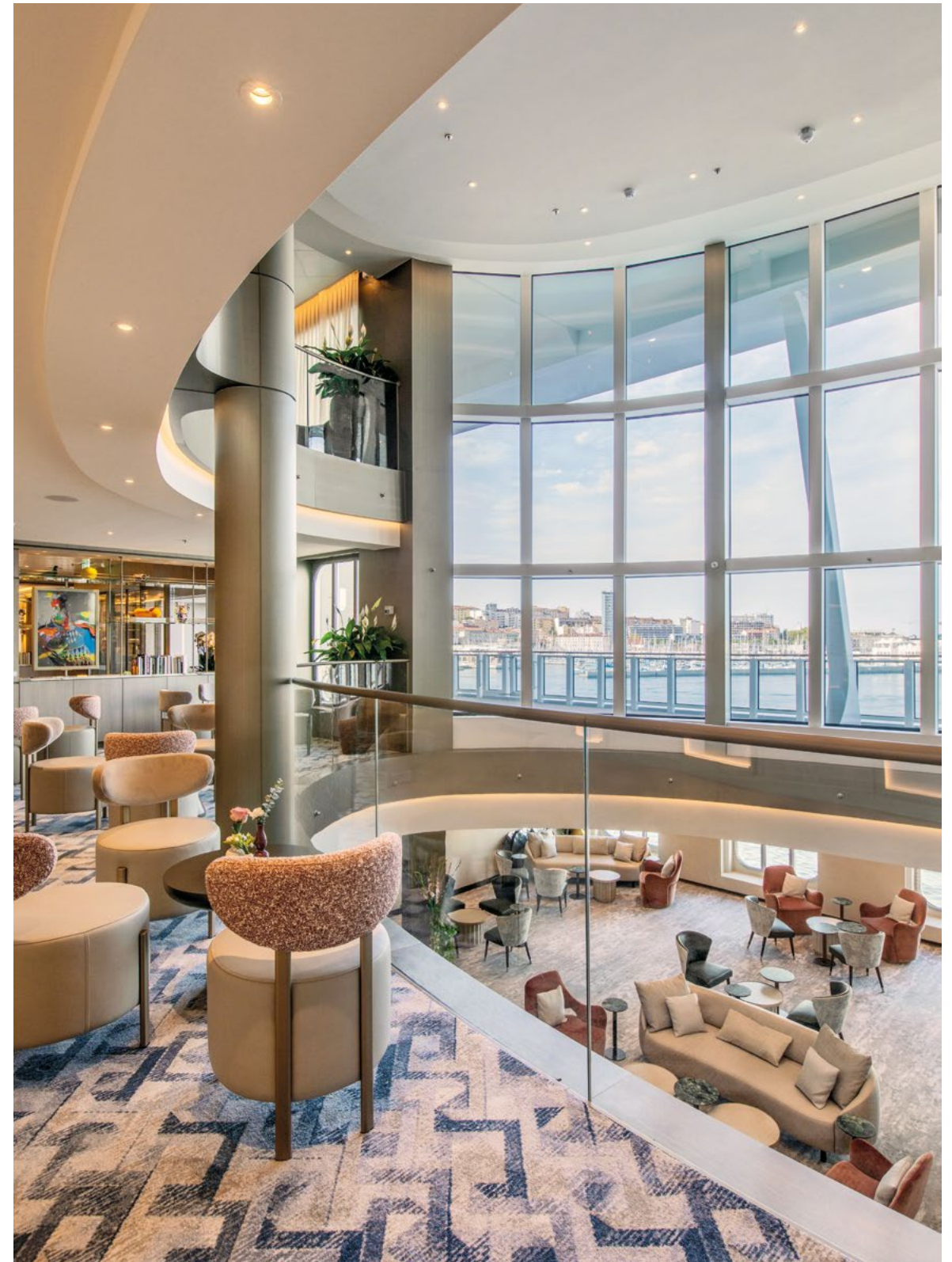


The Marquee, located on Deck 10

Let there be light.

Silver Ray was built from the water up to be as open as possible, with an innovative design that creates light-drenched spaces and breathtaking vistas all around, including glass walls in all suites and most public spaces. Glass elevators showcase your destination while our La Terrazza dining venue has 270° of glazing all the way around. All this culminates in a one-of-a-kind atrium, featuring a continuous floor-to-ceiling “glass wall” spanning two whole decks. And there’s so much more. With uninterrupted panoramas from all over the ship, *Silver Ray* can, at times, seem completely transparent as it opens you up to the world like never before.

On the right:
The new Atrium, with its floor-to-ceiling glass wall







*...it's a wonderful voyage
for all your senses.*

AN EVOLUTION IN LUXURY

Silver Ray invites you to try something new. Every day.

Silver Ray redefines luxury at sea, with more of everything you love and the space and time to enjoy it. You'll be spoilt for choice with an outstanding selection of innovative dining venues across the ship, as well as a series of onboard indulgent experiences that relax and pamper you throughout your voyage. All with far more personal space than ever before.



Sea And Land Taste – S.A.L.T.

Take an enlightened look at the cultures and communities of the world with S.A.L.T., our indulgent and innovative culinary programme. Featuring recipes, ingredients and stories from your destination, it's a unique gourmet experience that plays out across bright and spacious venues throughout *Silver Ray*. From menus that change with each place you visit to onboard spaces for creating and recreating local dishes, S.A.L.T. brings the flavours of the world right to your table.

An expansive view of our unique S.A.L.T. Lab, now located on Deck 10 and offering sweeping views of your destination



S.A.L.T. Lab and Chef's Table.

There's no place in the world like our S.A.L.T. Lab, a light and airy test kitchen overlooking the water with sweeping views of the coastline everywhere you look. This is where you're the star of the cooking show as you enjoy a hands-on interactive dining experience guided by our fantastic expert chefs. The light from inside blends with the light from outside as you mix locally-sourced ingredients to recreate your favourite dishes from each place you visit. Then, at night, this breathtaking venue becomes S.A.L.T. Chef's Table, a place to indulge in a choreographed menu highlighting exceptional recipes inspired by your destination, where the flavours change as often as the view outside.

On the left:
Final touches at S.A.L.T. Chef's Table



S.A.L.T. Kitchen, located on Deck 3



S.A.L.T. Bar



Fine dining, from sunrise to sunset and beyond.

Silver Ray brings you a new world of flavours, with an unrivalled variety of exquisite dining venues: eight restaurants in total, from formal to casual, larger to more intimate. Many are available early morning to late evening and you can sample a mix of cuisines, including international, French, Italian, Japanese and more. A unique way to experience the world anytime, right onboard.

Silver Note restaurant, located on Deck 5



SAVOUR A WORLD OF FLAVOUR AT:

THE GRILL | SPACCANAPOLI | ATLANTIDE | LA TERRAZZA | LA DAME | KAISEKI |
SILVER NOTE | S.A.L.T. KITCHEN | S.A.L.T. LAB | ARTS CAFÉ | IN-SUITE DINING

On the right, top to bottom: Kaiseki restaurant
and La Dame restaurant, both located on Deck 4



A new La Terrazza.

Silver Ray invites you to experience *la nuova cucina italiana* at our renewed La Terrazza restaurant. An ode to Italian gourmet, this Silversea classic brings you fresh twists on traditional recipes alongside authentic regional dishes for a sensory celebration of our unique heritage. You'll get that sense of indulgence associated with Italian cuisine in every bite, often with a subtle element of surprise as the best ingredients come together for this flavour adventure set against floor-to-ceiling windows and spectacular views. La Terrazza is open for casual, buffet-style breakfast and lunch indoor or *al fresco* on the outdoor terrace, while in the evening it transforms into a magnificent *à la carte* dining venue.



Atlantide restaurant, located on Deck 3



The Arts Café



A view of the Observation Lounge



On the right, top to bottom: a view of the Library and the Venetian Lounge

A bar or lounge, wherever you look.

Silver Ray connects you with friends old and new like never before, thanks to its distinctive bars and lounges. With a total of ten venues throughout the ship, you'll enjoy the luxury of choice: from spacious to small, elegant to more laid-back. All perfect for enjoying your favourite drink with your favourite fellow travellers.

SIP YOUR FAVOURITE DRINK AT:
S.A.L.T. BAR | THE DUSK BAR | POOL BAR | OBSERVATION LOUNGE |
CONNOISSEUR'S CORNER | PANORAMA LOUNGE | ARTS CAFÉ | DOLCE VITA |
VENETIAN LOUNGE | THE SHELTER



Panorama Lounge, located on Deck 5



Dolce Vita, located on Deck 5



A dazzling array of suites.

Silver Ray features a brand new generation of luxurious suites open to the world like never before, courtesy of the unique layout of our Nova-class ships. With more space and options available, you'll find the exact experience you're looking for every time, including all-new options at the far rear of the ship. Each suite features the best in creature comforts, Italian heritage design, floor-to-ceiling windows and private glass balconies overlooking a sea of destinations.

The following is a selection of suites onboard *Silver Ray*, with a full overview available on page 66 or at silversea.com

A view of the large windows and balcony of the Otium Suite



The Otium Suite

Enjoy 270° views from your outdoor whirlpool as you gaze out at the world from 40 m² (431 sq. ft.) of balcony right at the premium aft corner of the ship. An entirely new suite, exclusive to our Nova-class ships.

Clockwise (from top): Spacious living room with separate living and dining areas

Large bathroom with double faucets and large vanity mirror

Bedroom with vanity desk and custom-made luxury bed mattress



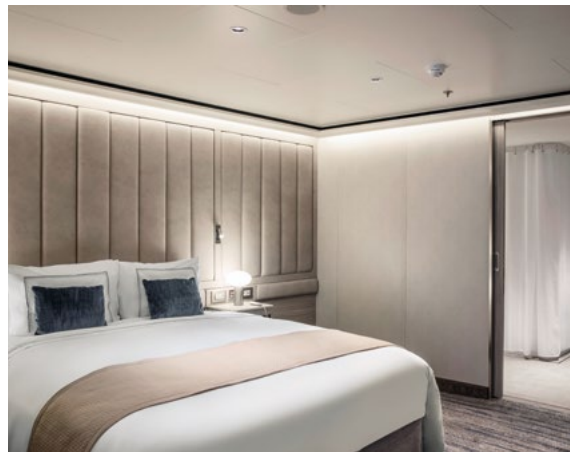
The Master Suite

Lounge in your private bathtub overlooking the ocean in this majestic new suite found only on our Nova-class ships. Floor-to-ceiling glass surrounds your living and bedroom areas for 270° views, wherever you are.

Clockwise (from top): Large living room features ample glass windows and separate seating area

Spacious bedroom with vanity desk overlooking the sea and custom-made luxury bed mattress

Large bathroom with dual faucets, large vanity mirror and bathtub



The Silver Suite

One of Silversea's most appreciated suite choices, and one of our Venetian Society favourites, its innovative design features full sea views from both living room and bedroom, and a generous dining area perfect for entertaining.

Clockwise (from top left): Bedroom with custom-made luxury bed mattress and plush carpeting

Large bathroom with large vanity mirror and separate large shower

Separate living area with floor-to-ceiling glass doors that open on to a private veranda



The Junior Grand Suite

Wonderfully located at the top bow position, this spacious suite features a pleasantly secluded bedroom offering incredible open views of your destination, including from the ample bathtub directly overlooking the sea.

Clockwise (from top left): Large bathroom with double faucets, large vanity mirror and bathtub directly overlooking the sea outside

Bedroom with custom-made luxury bed mattress and an open view of your destination

Separate dining and living room areas with large floor-to-ceiling glass doors that open on to a private veranda



The Medallion Suite

A new suite category launched onboard our Nova-class ships, the Medallion Suite is all about space, with a large living area, bedroom with king-size bed and generous balcony that offers up panoramic light-filled views.

Clockwise (from top left): Large living area separated from the bedroom and another small area with desk and chair

Spacious bathroom with dual faucets and large vanity mirror and bathtub

Separate bedroom with custom-made luxury bed mattress



The Veranda Suite

A Silversea signature suite, it features the elegant décor of *Silver Ray* and floor-to-ceiling glass doors that open up onto a private teak veranda. Premium Veranda offers a privileged location top aft and breathtaking views of the open sea.

Clockwise (from top left): A generous seating area and floor-to-ceiling glass doors open on to a private teak veranda and the sea beyond

Spacious bathroom with double faucets, large vanity mirror and bathtub

Sleeping area and living area with floor-to-ceiling glass doors that open on to a private teak veranda



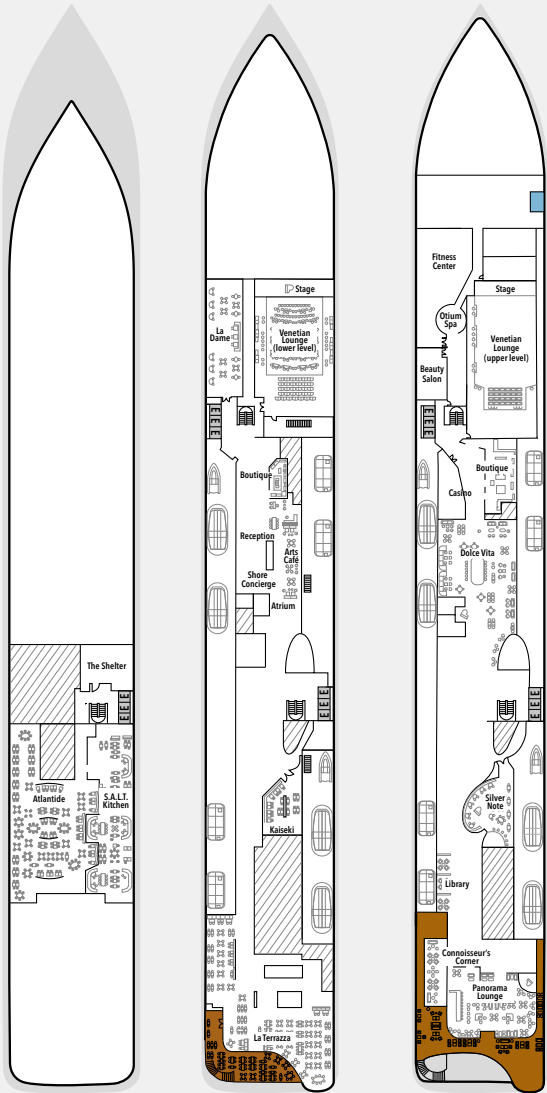
SILVER RAY VOYAGES

A new look at a world of destinations.

Silver Ray sees the light for the first time in summer 2024, setting sail from Lisbon, Portugal. The ship will set off on a unique series of immersive voyages, visiting many fascinating destinations across multiple regions. Thanks to its innovative, light-filled and open design, you'll experience a more seamless connection with the places you visit, as you bear witness to their spectacular nature, history and culture, and reveal their innermost culinary secrets.

EXPLORE →

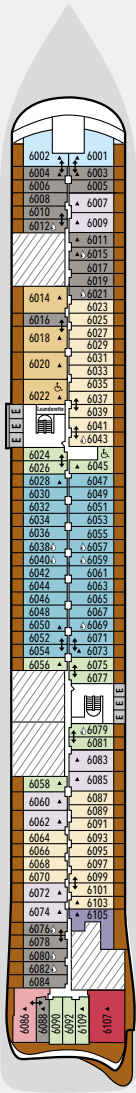
Deck plans



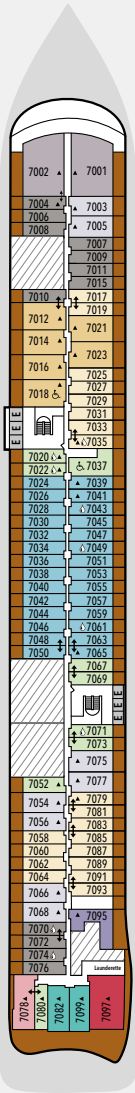
DECK 3
The Shelter
Atlantide
S.A.L.T. Kitchen

DECK 4
La Dame
Venetian Lounge
Boutique
Reception
Arts Café
Shore Concierge
Atrium
Kaiseki
La Terrazza

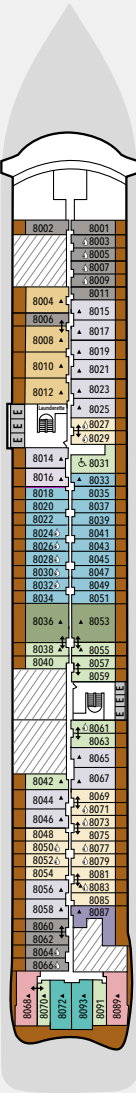
DECK 5
Otium Spa
Fitness Centre
Beauty Salon
Casino
Boutique
Dolce Vita
Silver Note
Library
Connoisseur's Corner
Panorama Lounge



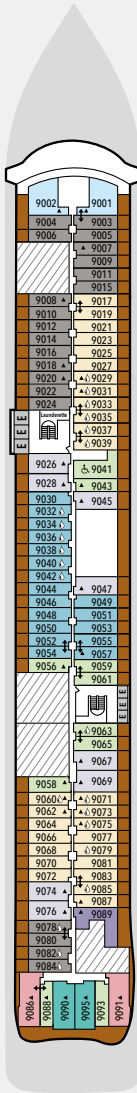
DECK 6
Suites



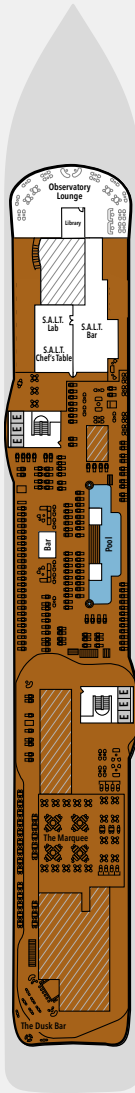
DECK 7
Suites



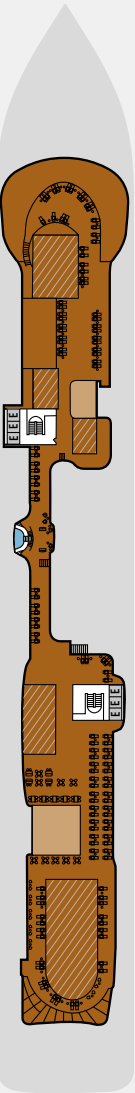
DECK 8
Suites



DECK 9
Suites



DECK 10
Observation Lounge
S.A.L.T. Lab
S.A.L.T. Chef's Table
S.A.L.T. Bar
Pool Deck
Pool Bar
The Marquee
The Grill & Spaccanapoli
The Dusk Bar
Jogging Track



DECK 11
The Cliff Whirlpool
Sun Deck



SHIP SPECIFICATIONS

Crew	544
Officers	International 728
Guests	54,700
Tonnage	801 Feet / 244.2 Mt
Length	97 Feet / 29.6 Mt
Width	19.4 Knots
Speed	9
Passenger Decks	↑
Connecting Suites	↓
3rd Guest Capacity	▲
Wheelchair Accessible Suites	♿
Veranda suites with bath & shower	🚿
Technical Areas	🔧
Built	2023
Registry	Bahamas

SUITE CATEGORIES

Otium Suite	●
Owner's Suite	●
Grand Suite	●
Master Suite	●
Signature Suite	●
Silver Suite	●
Junior Grand Suite	●
Premium Medallion Suite	●
Medallion Suite	●
Premium Veranda Suite	●
Deluxe Veranda Suite	●
Superior Veranda Suite	●
Classic Veranda Suite	●

Deck plans are for illustration purposes only and may be subject to change.

Suite diagrams shown are for illustration purposes only and may vary from actual square footage. Please refer to suite specifications for square footage.

Images are intended as a general reference. Features, materials, finishes and layout may be different than shown.

Suites

Suite diagrams are for illustration purposes only. Features, materials, finishes and layout may differ from shown and are subject to change. Sizes are not to scale.



OTIUM SUITE

1324 SQ.FT. / 123 M² INCLUDING VERANDA (431 SQ.FT. / 40 M²)

- Large veranda with patio furniture and floor-to-ceiling glass doors and private hot tub
- Living room with convertible sofa to accommodate an additional guest
- Separate dining area
- Bathroom with double faucets on large vanity, separate shower and whirlpool bath
- Twin beds or king-sized bed
- Custom-made luxury bed mattress
- Walk-in wardrobe(s) with personal safe
- Vanity table(s)
- Writing desk(s)
- Two large flat-screen TVs
- Sound system with Bluetooth connectivity
- Espresso machine



OWNER'S SUITE

Available as a one-bedroom configuration or as a two-bedroom by adjoining with a Premium Veranda Suite

ONE BEDROOM: 1055 SQ.FT. / 98 M² INCLUDING VERANDA (172 SQ.FT. / 16 M²)
TWO BEDROOM: 1412 SQ.FT. / 131 M² INCLUDING VERANDA (228 SQ.FT. / 21 M²)

- Large veranda with patio furniture and floor-to-ceiling glass doors; Bedroom Two has additional veranda
- Living room with convertible sofa to accommodate an additional guest; Bedroom Two has additional sitting area
- Separate dining area
- Bathroom with double faucets on large vanity, separate shower and whirlpool bath; Bedroom Two has additional bathroom with shower
- Twin beds or king-sized bed; Bedroom Two has additional twin beds or queen-sized bed
- Custom-made luxury bed mattress
- Walk-in wardrobe(s) with personal safe
- Vanity table(s)
- Writing desk(s)
- Two large flat-screen TVs, plus one additional flat-screen TV in Bedroom Two
- Sound system with Bluetooth connectivity
- Espresso machine



GRAND SUITE

Available as a one-bedroom configuration or as a two-bedroom by adjoining with a Classic Veranda Suite

ONE BEDROOM: 915 SQ.FT. / 85 M² INCLUDING VERANDA (140 SQ.FT. / 13 M²)
TWO BEDROOM: 1272 SQ.FT. / 118 M² INCLUDING VERANDA (196 SQ.FT. / 18 M²)

- Large veranda with patio furniture and floor-to-ceiling glass doors; Bedroom Two has additional veranda
- Living room with convertible sofa to accommodate an additional guest; Bedroom Two has additional sitting area
- Separate dining area
- Bathroom with double faucets on large vanity, separate shower and whirlpool bath; Bedroom Two has additional bathroom with shower
- Twin beds or king-sized bed; Bedroom Two has additional twin beds or queen-sized bed
- Custom-made luxury bed mattress
- Walk-in wardrobe(s) with personal safe
- Vanity table(s)
- Writing desk(s)
- Two large flat-screen TVs, plus one additional flat-screen TV in Bedroom Two
- Sound system with Bluetooth connectivity
- Espresso machine



MASTER SUITE

Available as a one-bedroom configuration or as a two-bedroom by adjoining with a Premium Veranda Suite or Classic Veranda Suite

ONE BEDROOM: 721-826 SQ.FT. / 67-77 M² INCLUDING VERANDA (233-330 SQ.FT. / 22-31 M²)
TWO BEDROOM: 1078-1183 SQ.FT. / 100-110 M² INCLUDING VERANDA (286-383 SQ.FT. / 27-36 M²)

- Large veranda with patio furniture and floor-to-ceiling glass doors; Bedroom Two has additional veranda
- Living room with convertible sofa to accommodate an additional guest; Bedroom Two has additional sitting area
- Separate dining area
- Bathroom with double faucets on large vanity, separate shower and whirlpool bath; Bedroom Two has additional bathroom with shower
- Twin beds or queen-sized bed; Bedroom Two has additional twin beds or queen-sized bed
- Custom-made luxury bed mattress
- Walk-in wardrobe(s) with personal safe
- Vanity table(s)
- Writing desk(s)
- Two large flat-screen TVs, plus one additional flat-screen TV in Bedroom Two
- Sound system with Bluetooth connectivity
- Espresso machine



SIGNATURE SUITE

700 SQ.FT. / 65 M² INCLUDING VERANDA
(172 SQ.FT. / 16 M²)

- Large veranda with patio furniture and floor-to-ceiling glass doors
- Living room with convertible sofa to accommodate an additional guest
- Separate dining area
- Bathroom with double faucets on large vanity, separate shower and whirlpool bath
- Twin beds or queen-sized bed
- Custom-made luxury bed mattress
- Walk-in wardrobe(s) with personal safe
- Vanity table(s)
- Writing desk(s)
- Two large flat-screen TVs
- Sound system with Bluetooth connectivity
- Espresso machine



SILVER SUITE

Available as a one-bedroom configuration or as a two-bedroom by adjoining with a Superior Veranda Suite

Two suites are available as a wheelchair accessible suite.

ONE BEDROOM: 678 SQ.FT. / 63 M² INCLUDING VERANDA (118 SQ.FT. / 11 M²)
TWO BEDROOM: 1033 SQ.FT. / 96 M² INCLUDING VERANDA (172 SQ.FT. / 16 M²)

- Veranda with patio furniture and floor-to-ceiling glass doors; Bedroom Two has additional veranda
- Living room with convertible sofa to accommodate an additional guest; Bedroom Two has additional sitting area
- Separate dining area
- Bathroom with double faucets on large vanity, separate shower and whirlpool bath; Bedroom Two has additional bathroom with shower
- Wheelchair accessible suite has a bathroom with vanity and separate shower and a bedroom with twin beds or queen-sized bed
- Twin beds or king-sized bed; Bedroom Two has additional twin beds or queen-sized bed
- Custom-made luxury bed mattress
- Walk-in wardrobe with personal safe
- Vanity table
- Writing desk
- Two large flat-screen TVs, plus one additional flat-screen TV in Bedroom Two
- Sound system with Bluetooth connectivity
- Espresso machine



JUNIOR GRAND SUITE

Available as a one-bedroom configuration or as a two-bedroom by adjoining with a Classic Veranda Suite

ONE BEDROOM: 581-624 SQ.FT. / 54-58 M² INCLUDING VERANDA (65 SQ.FT. / 6 M²)
TWO BEDROOM: 936-980 SQ.FT./87-91 M² INCLUDING VERANDA(118 SQ.FT. / 11 M²)

- Veranda with patio furniture and floor-to-ceiling glass doors; Bedroom Two has additional veranda
- Living room with convertible sofa to accommodate an additional guest; Bedroom Two has additional sitting area
- Separate dining area
- Bathroom with double faucets on large vanity, separate shower and whirlpool bath; Bedroom Two has additional bathroom with shower
- Twin beds or king-sized bed; Bedroom Two has additional twin beds or queen-sized bed
- Custom-made luxury bed mattress
- Walk-in wardrobe with personal safe
- Vanity table
- Writing desk
- Two large flat-screen TVs, plus one additional flat-screen TV in Bedroom Two
- Sound system with Bluetooth connectivity
- Espresso machine



PREMIUM MEDALLION SUITE / MEDALLION SUITE

527 SQ.FT. / 49 M² INCLUDING VERANDA
(86 SQ.FT. / 8 M²)

- Veranda with patio furniture and floor-to-ceiling glass doors
- Living room with convertible sofa to accommodate an additional guest
- Bathroom with double faucets on large vanity, separate shower and full-sized bath
- Twin beds or queen-sized bed; Bedroom Two has additional twin beds or queen-sized bed
- Custom-made luxury bed mattress
- Walk-in wardrobe with personal safe
- Vanity table
- Writing desk
- Two large flat-screen TVs
- Sound system with Bluetooth connectivity
- Espresso machine



PREMIUM VERANDA / DELUXE VERANDA / SUPERIOR VERANDA / CLASSIC VERANDA

Four Premium Veranda Suites are available as a wheelchair accessible suite.

357 SQ.FT. / 33 M² INCLUDING VERANDA
(53 SQ.FT. / 5 M²)

- Veranda with patio furniture and floor-to-ceiling glass doors
- Sitting area
- Twin beds or queen-sized bed
- Bathroom with double faucets on large vanity, separate shower or full-sized bath and separate shower
- Wheelchair accessible suite has a bathroom with vanity and separate shower
- Custom-made luxury bed mattress
- Walk-in wardrobe with personal safe
- Vanity table
- Writing desk
- One large flat-screen TV

PHOTOS BY STEVE McCURRY

Pag 28-29: La Pedrera Essential, Barcelona, Spain, 2018

Pag 30: Barcelona, Spain, 2018

